

Chicken Ranch Casino Resort

How to build when the mountains are calling





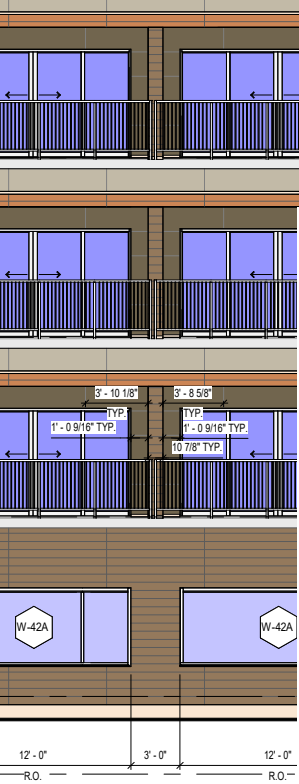
How to build when the mountains are calling

The expanded Chicken Ranch Casino Resort in Jamestown, Calif., lies in a spectacularly beautiful corner of California — nestled at the base of Table Mountain, a stone's throw from Yosemite National Park and the Sierra Foothills. To pay homage to the stunning landscape, the building's design from Worth Group Architects blends into the mountain and connects guests with the environment. That intent translates to numerous benefits for future visitors, and many challenges that Suffolk overcame in constructing a complex design in a remote location — all while the current casino remains open and operational.

To achieve the seamless transitions between the building and the mountain, the Chicken Ranch buildings have a three-tiered hybrid structure, with balconies stacking in a sawtooth pattern in the side of the hill and alternating on every floor. The site itself is rocky and steeply sloped, with slab on grade construction up to level three. The Suffolk team supervised an

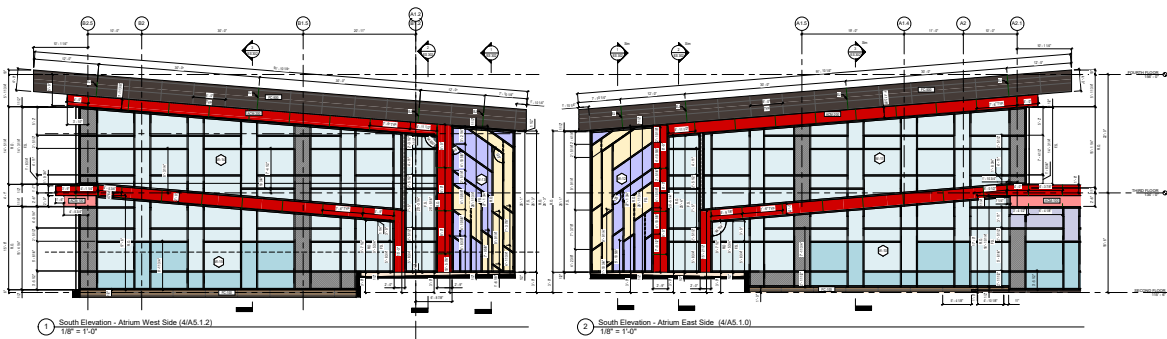
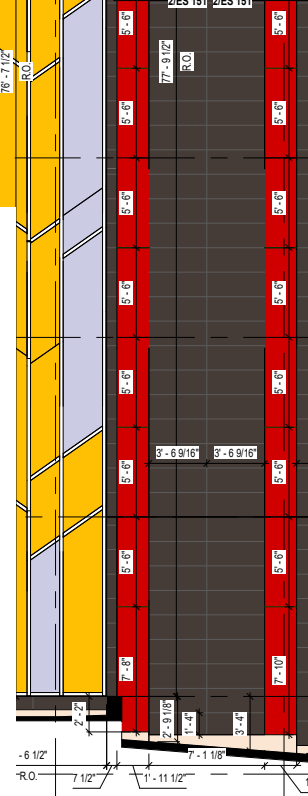
extensive blasting process for excavation, while at the same time undertaking a collaborative coordination approach for the building's exterior.

The exterior of the building consists of fiber cement, aluminum panels, Exterior Insulation Finishing System (EIFS) and stone, with varying geometry thanks to the sawtooth lines. The two towers, with a restaurant at the top of the east tower, also have their own geometry, plus plenty of line movement in the main entrance and podium portion. Working with the Chicken Ranch design team and the trade partners, the Suffolk team used shop drawings to create coordinated layout drawings. That process helped the team determine challenges and solutions surrounding the tie-in of different materials. It also created a single point of truth from which all project stakeholders can use and build, leading to the baseline for a 3D model with accurate project geometry, coordination, and consistency.



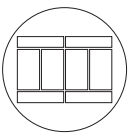
The Suffolk team also accounted for the remote location in its approach to workforce management, procurement and utilities. Hiring subcontractors based in the Sacramento Valley was a major focus for the project, and many subcontractors have workers relocate to the Jamestown area during the workweek. The rural nature of the site also made it possible for the team to procure materials early and store them in a nearby warehouse. Based on market conditions, experience on other projects and feedback from the trades, the Suffolk team determined which items had long lead times and secured those as much as eight months ahead of installation. Finally, since the municipality doesn't provide water, sewer or gas to the project, the team communicates frequently with the client to align schedules on when these utilities will be in service.

Once complete, the Chicken Ranch Casino Resort will house a gaming floor with unparalleled views of the mountains and a nine-story, 196-key hotel with a day spa, fitness center, roof-top pool, and a conference center. The careful planning and details present throughout the project ensure the property remains true to its roots and honors the surrounding lands. The project is expected to be complete in the second quarter of 2024.



The coordinated layout drawings for the exterior of the building.

By the numbers



138,000

Total square feet of curtain wall glazing systems

8,500

Total square feet of self-tinting electrochromic exterior glazing

9

Total stories, making the Chicken Ranch Casino Resort the tallest structure in Tuolumne County



698,000

Linear feet of post-tensioned cable, totaling 181 tons